

# ART IN & AROUND OSWESTRY

# 10th BVA OPEN STUDIOS 2010

Sat 5th & Sun 6th June  
Sat 12th & Sun 13th June  
10am - 5pm



Sponsored by



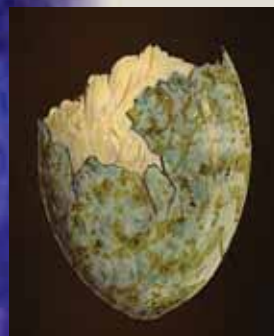
An independent, co-educational day  
and boarding school for ages 0 - 18.



**JANIE McLEOD**  
Large abstract oil paintings  
and drawings inspired by the  
landscapes of Shropshire  
and Cornwall  
**JEANNIE WELLS**  
Recent paintings  
**Pale Hound Cottage,**  
**9 Oakhurst Road,**  
**Oswestry SY11 1BH**  
01691-658960  
Studio at side entrance



**ALISON HOLT**  
Machine embroidered  
landscapes, gardens,  
seascapes, books and cards  
**Highfield,**  
**85 Oakhurst Road,**  
**Oswestry SY11 1BL**  
01691-653118



**JOHN WOODYATT**  
Paintings, prints &  
drawings  
**JOHN SMOUT**  
Paintings  
and  
drawings  
**Sunnyside,**  
**47 Upper Brook  
Street,**  
**Oswestry SY11 2TG**  
01691-662613



**COMMEMORATIVE  
WALL HANGING**  
A quilted textile  
wall-hanging  
in applique, hand and  
machine embroidery,  
fabric painting  
**School Chapel,**  
**Oswestry School,**  
**Upper Brook Street,**  
**Oswestry  
SY11 2TL**  
01691-681104



**JUDITH HARRISON**  
Mixed media & prints  
**DIANA BAUR**  
Mixed media abstract  
paintings  
**Archive Room, School House, Oswestry School,**  
**Upper Brook Street, Oswestry SY11 2TL**  
01691-681104



**MYK BRIGGS**  
Photographs, demonstration  
**GILL CROZIER**  
Mixed media paintings and  
prints  
**Archive Room, School House, Oswestry School,**  
**Upper Brook Street, Oswestry SY11 2TL**  
01691-681104



**JUDY GOUGH**  
Prints, paintings, drawings,  
mainly based on landscape  
**Lilac Cottage, Leighton Place, off Lower Brook Street,**  
**Oswestry SY11 2HN**  
01691-679039



**BOB KNOWLES**  
Sculpture in steel  
and stone  
**Lilac Cottage, Leighton Place, off Lower Brook Street,**  
**Oswestry SY11 2HN**  
01691-679039



**ANTONIO SPREAFICO**  
Garden Assemblages,  
Paintings  
**12 Lower Brook Street, Oswestry SY11 2HJ**  
01691-662068



**CAROL ADAMS**  
Watercolours, pastels, crayon  
and ink drawings. Landscape  
and still life  
**12 Lower Brook Street, Oswestry SY11 2HJ**  
01691-662068



**ROB JONES**  
Bronze and steel  
sculptures  
**12 Lower Brook Street, Oswestry SY11 2HJ**  
01691-662068

# ART IN



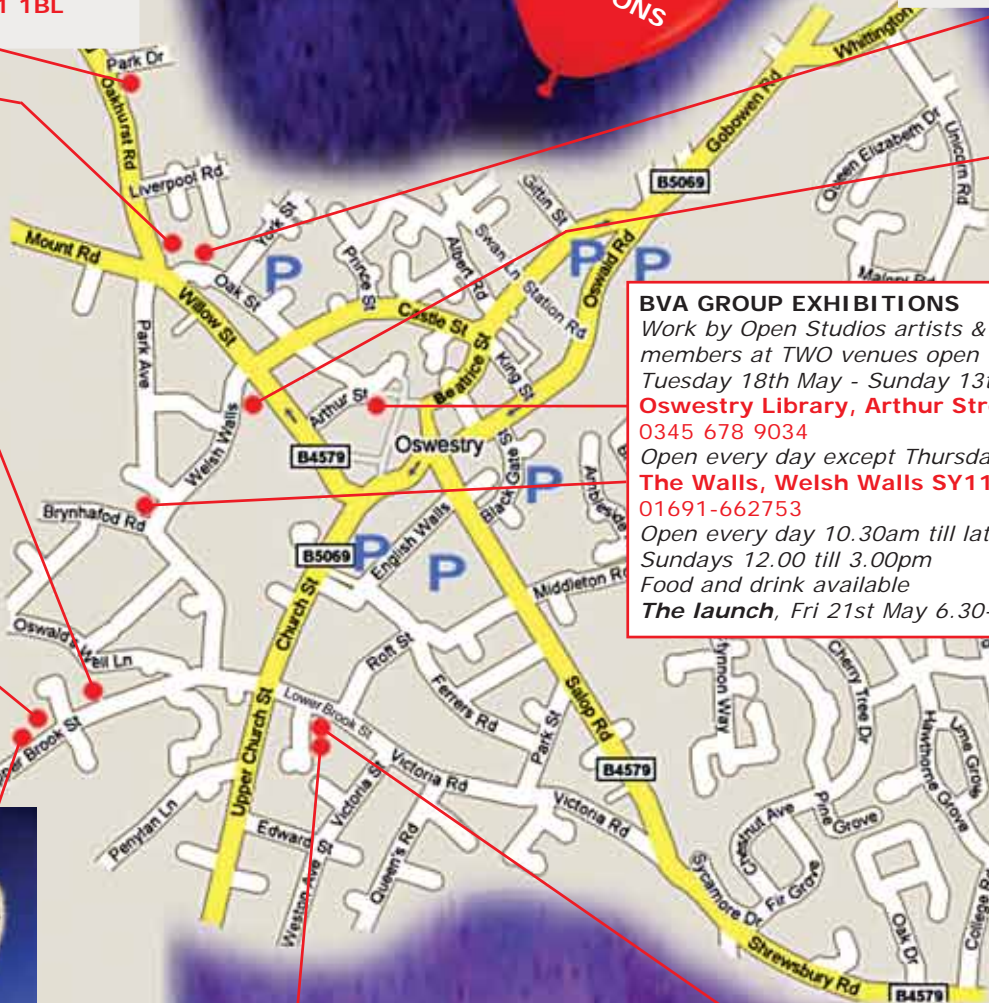
**ROS HORNBUCKLE**  
Mixed media and textile  
pictures, bags, printed  
silk tops  
**Tannery Cottage, Oak Street,**  
**Oswestry SY11 1LW**  
01691-654961



**GRAHAM MITCHELL**  
Jewellery, photography,  
pen & ink  
**Tannery Cottage, Oak Street,**  
**Oswestry SY11 1LW**  
01691-654961



**HILARY GREER**  
Ceramics & Drawing  
**Ty Gwyn,**  
**57 Willow Street,**  
**Oswestry  
SY11 1AQ**  
01691 680831



**BVA GROUP EXHIBITIONS**  
Work by Open Studios artists & other BVA  
members at TWO venues open  
Tuesday 18th May - Sunday 13th June  
**Oswestry Library, Arthur Street SY11 1JN**  
0345 678 9034  
Open every day except Thursday and Sunday  
**The Walls, Welsh Walls SY11 1AW**  
01691-662753  
Open every day 10.30am till late  
Sundays 12.00 till 3.00pm  
Food and drink available  
**The launch, Fri 21st May 6.30-8.30pm**



**RACHAEL MONTGOMERY**  
One off, fused glass bowls,  
panels and light pieces,  
twisted views with stories  
in digital images.  
Contemporary glass  
jewellery  
**JAS DAVIDSON**  
Figurative sculptures  
**84 Llys Road, Oswestry SY11 2UT**  
01691-655887  
Salop Road continue to Shrewsbury Road, at end  
of 30mph turn left into College Road. Turn right  
into Hazel Grove then second right to Llys Road

**ROB LAWTON**  
Paintings  
**HAYLEY PARFITT**  
I construct site-  
specific Installations  
by drawing in space  
with threads

Access for  
the disabled  
Limited  
access  
Please phone  
each studio  
for detail

# ART IN & AROUND OSWESTRY

Members of the BVA welcome you to their studios in and around Oswestry. It is a unique opportunity to view the work of each exhibiting artist, talk to them about it and if you like what you see, buy direct from the person who created it.



The BVA is a network of contemporary artists working in and around the Oswestry area. It provides members with a monthly information sheet, a twice yearly newsletter and large amounts of web space. It also offers the opportunity to join in this annual Open Studios event and regular discussion evenings to promote working links between members.

For more information please contact:  
**Graham Mitchell tel 01691 654961**

[www.BorderlandVisualArts.com](http://www.BorderlandVisualArts.com)



**BEATRIZ CABRERA**  
Sculpture



**BEN BROADBENT**  
Wildlife in metal



**JUDY GREAVES**  
Sculpture in stone



**JACQUI DODDS**  
Mixed media abstract paintings



**DARREN FRASER**  
Black and white portraiture

**Ashfield, Bron-y-Garth SY10 7LY**  
01691-773663  
From the mini roundabout in Weston Rhyn take the exit for Bronygarth, after 1 mile the studio is on the left



**JAN SINGLETON**  
Modern stained & fused glass  
**Pandy Mill, Pandy, Glyn Ceiriog LL20 7NT**  
01691-718382  
Go to Glyn Ceiriog, follow signs for Pandy. After 1 mile, Pandy Mill Gallery is a large white building on left



**MARY CUNAH**  
Printing with etching and collagraphs also demonstrations  
**Pen-y-Bryn, Llansilin SY10 7QG**  
01691-791386  
Go south out of Llansilin on B4580, ¼ mile outside village, turn right at crossroads. After ½ mile take track on left just before 'road narrows' sign. House & studio at top of track



**BOB GUY**  
Wood engravings and hand made books, including collaborations with Canadian poet Childe Roland

**Y Dolydd Workhouse Gallery, The Workhouse, Llanfyllin SY22 5AG**  
07790 857678

Go west on A490 towards Llanfyllin. Entrance on right 1 mile before Llanfyllin



**CORDELIA WEEDON**  
Photography African connections photo diaries from Uganda

# ART AROUND



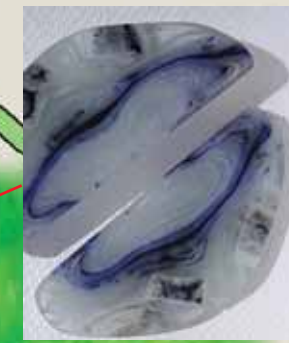
**JIM HEATH**  
Figurative and landscape artist working in a variety of media  
**2, Hand Terrace, Holyhead Road, Chirk LL14 5EU**  
01691 772710  
Studio backs onto main car park in Chirk



**DES JONES**  
Studies of musicians & landscapes in acrylic & oils



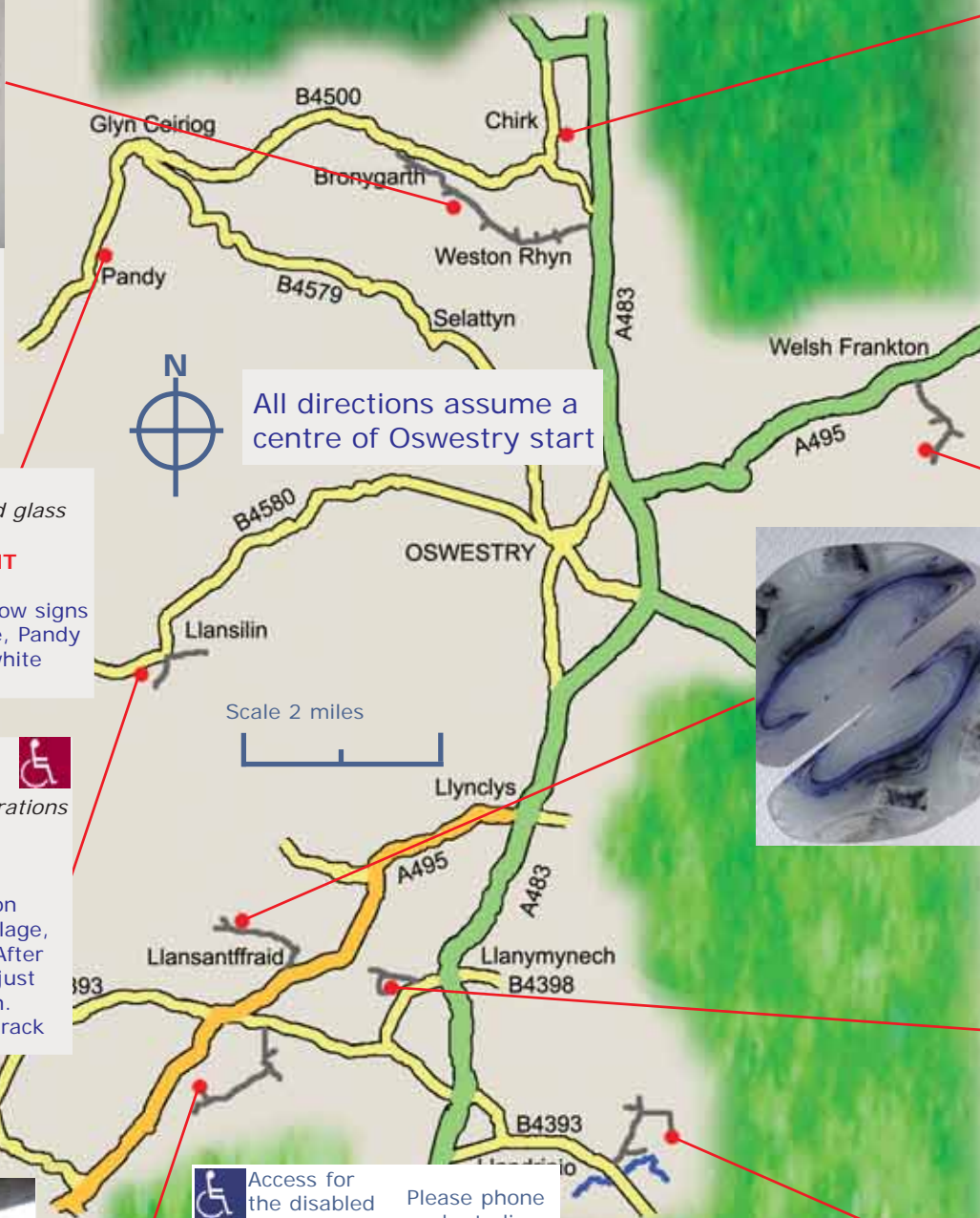
**CLIVE WILSON**  
Sculpture Garden, garden/woodland sculptures, paintings and handmade didgeridoos  
**Yew Tree House, Lower Frankton SY11 4PB**  
01691 622126  
A495 to Welsh Frankton, turn down by the church towards Lower Frankton. Take this road for 1½ miles (follow signs) studio on the right



**PHILIPPA HUGHES**  
Fine art studio glass, pictures, bowls and jewellery  
**Glyn Issa, Llansantffraid SY22 6TN**  
01691-828416  
Go towards Llansantffraid on A495. Just before the village, turn right opposite Bryn Vyrnwy Holiday Park, and right at T junction (see Pen-Isa'R-Llan). Go 0.3 mile and take left fork. Glyn Issa is first house on right after another half mile – a black & white house down a steep drive



**HELEN LOVE**  
Textile-based Artwork, 2D/3D  
**Rainbow's End 9, Gwelfryn, Carreghofa Lane, Llanymynech SY22 6LJ**  
01691 839064  
Turn west on B4398 at the cross roads in Llanymynech, continue for 200 yards and turn right into Carreghofa Lane, first left to Gwelfryn, 9 is the last house



All directions assume a centre of Oswestry start

Access for the disabled  
Limited access  
Please phone each studio for detail



**JOSH BOWE**  
Largely figurative, some abstract  
**8 The Courtyard, Lower Trewylan, Llansantffraid SY22 6TJ**  
01691-828519  
From Oswestry, take the A495 to Llansantffraid. As you come into the village take a left over the bridge towards Llanymynech. Fork right at Jugs Inn and go 0.7 mile to crossroads. Turn right towards Trefnanney, go 0.9 mile to a modern detached house on left with a private drive on the right, labelled TREW Y LLAN ISAF. Go to the end of drive and find a horseshoe of barn conversions No 8 is first on left



**JOHN WRAGG**  
Mixed Media 2D & 3D  
**Sychpwll, Llandrinio SY22 6SH**  
07816 941030  
Go south on the A483, at Four Crosses go east on the B4393, go through Llandrinio, and turn left just before the traffic lights on the bridge. Take 2nd right (approx 1000 yards) and follow road to the end